



PALM BEACH MODULAR GANGWAYS AND RAILINGS - PALM BEACH, FL

PROJECT INFO:

OWNER:

Port of Palm Beach, Florida

ENGINEER:

AECOM

PROJECT VALUE:

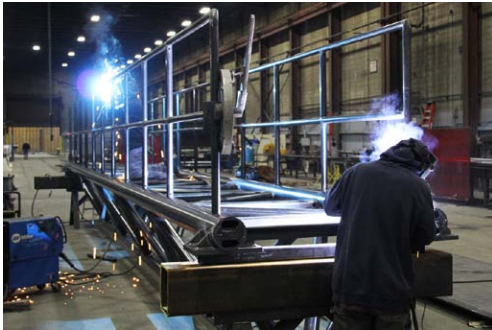
\$127,613

TECHNOLOGIES/MATERIALS:

Galvanized steel gangways and railings

PROJECT HIGHLIGHTS:

All gangways and railings were galvanized for weather protection



ADDITIONAL DETAILS

A new mini-berth, Berth 17, was constructed at the Port of Palm Beach in Florida. Methuen Construction's Metal Fabrication Team provided three modular galvanized gangways with fiberglass grating, bearing plates, and railings for the project. The gangways were fabricated in the Plaistow fabrication shop, and then shipped to Palm Beach for installation.