



CHARLOTTE CHP FACILITY TANK BUILD & INSTALLATION - CHARLOTTE, NC

PROJECT INFO:

OWNER:

Blue Sphere Corporation

ENGINEER:

Permastore Limited UK

PROJECT VALUE:

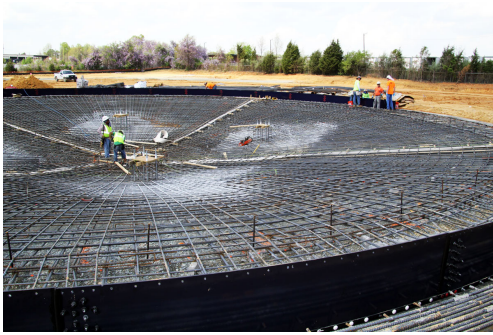
Confidential

TECHNOLOGIES/MATERIALS:

Glass-fused-to-steel tanks, anaerobic digestion

PROJECT HIGHLIGHTS:

Methuen Construction built the 10 glass-fused-to-steel tanks from the ground up. The waste-to-energy facility produces 5.2 MW of electricity that is sent to the electrical grid.



ADDITIONAL DETAILS

Methuen Construction built and installed 10 glass-fused-to-steel tanks for Blue Sphere's waste-to-energy facility in Charlotte, NC. The project is a biogas processing facility that turns food waste from the surrounding area into 5.2 MW of electricity. The facility utilizes anaerobic digestion to produce methane gas that is captured and piped to an engine that turns a turbine to generate electricity and heat. The power generated at the facility is sent back to the electrical grid through an agreement with Duke Energy.