



## REVERE GAS FIRED TURBINE INSTALLATION - REVERE, MA

### PROJECT INFO:

**OWNER:**

New England Confectionery Company (NECCO)

**ENGINEER:**

The Austin Company

**PROJECT VALUE:**

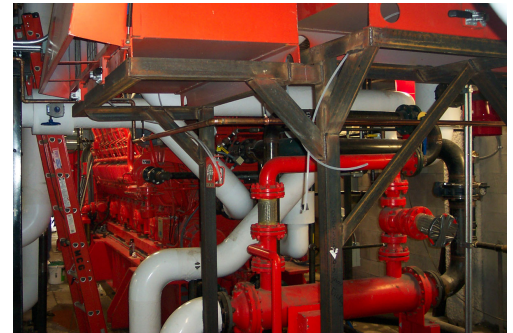
\$9.6 Million

**TECHNOLOGIES/MATERIALS:**

Installation of Mechanical Process & Kitchen  
Production Systems

**PROJECT HIGHLIGHTS:**

More than 90,000 linear feet of piping was installed  
during this project.



### ADDITIONAL DETAILS

Methuen Construction was the Mechanical Contractor for this project that built a new gas-fired turbine cogeneration facility at the NECCO candy factory in Revere, MA. Construction included the rigging and setting of two 60,000 pound turbine generators, associated pressure vessels, selective catalytic reduction units, heat recovery steam generators, a 600 horsepower (HP) steam generator, cooling towers, heat exchangers, and 90,000 linear feet of carbon and stainless steel piping.