



PNSY DOCKSIDE REFUELING ENCLOSURE (DRE-6) - KITTERY, ME

PROJECT INFO:

OWNER:

Portsmouth Naval Shipyard - U.S. Navy

ENGINEER:

Naval Facilities Engineering Command

PROJECT VALUE:

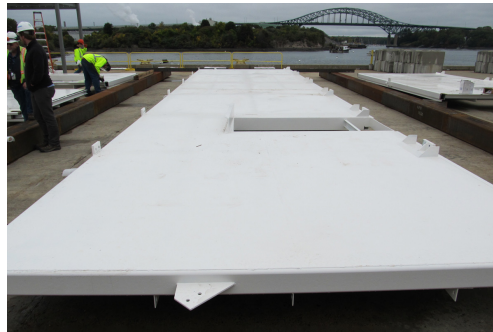
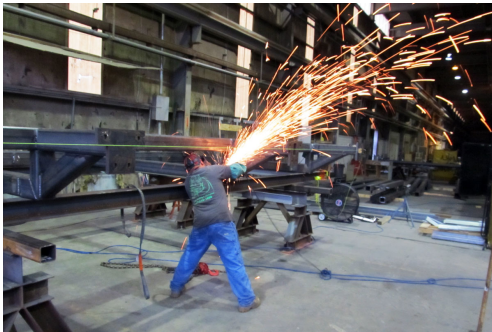
Confidential

TECHNOLOGIES/MATERIALS:

Fabricated Steel Modules

PROJECT HIGHLIGHTS:

The modules were transported to the Shipyard via barge for installation.



ADDITIONAL DETAILS

The project involved the procurement of materials and equipment, transportation, supervision, and work related to the fabrication and installation of a modular steel enclosure measuring 25'W x 50'H x 35'L. The features of the module include insulation, interior access ladders, platforms, a bridge crane, exterior mechanical platforms, an operable roof, doors, mechanical ventilation system, and lights and power. Once complete, the modular unit was transported to the Naval Shipyard via barge, where it was installed. All work was done to exact federal specifications.