



SESD COMBINED HEAT AND POWER FACILITY - SALEM, MA

PROJECT INFO:

OWNER:

South Essex Sewerage District

ENGINEER:

AECOM

PROJECT VALUE:

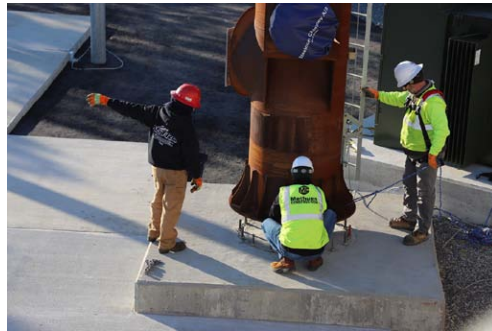
\$5.7 Million

TECHNOLOGIES/MATERIALS:

Construction of a complete Modular Heat & Power Facility

PROJECT HIGHLIGHTS:

All site work and equipment placement is part of this project



ADDITIONAL DETAILS

This project consists of the construction of a modular Combined Heat & Power Facility (CHP) at the South Essex Sewerage District Wastewater Treatment Plant in Salem, MA. The project team is responsible for all site work, all emissions equipment, and related work at the existing treatment plant. Once the CHP facility is complete, it will reduce the district's energy costs by about \$500,000 per year.