

## BARNSTABLE EMERGENCY PUMP STATION - BARNSTABLE, MA

### PROJECT INFO:

**OWNER:**

Town of Barnstable, MA

**ENGINEER:**

Weston & Sampson

**PROJECT VALUE:**

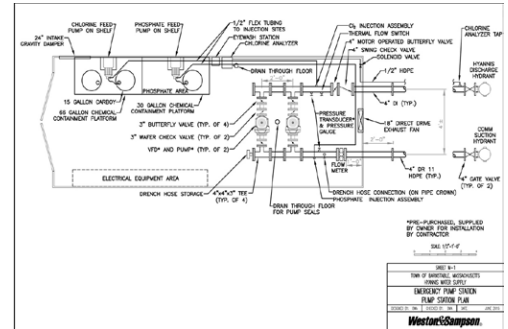
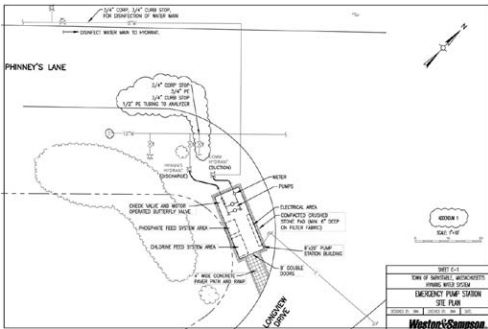
\$188,874.00

**TECHNOLOGIES/MATERIALS:**

Portable self-contained water pump station in a Conex box

**PROJECT HIGHLIGHTS:**

The pump station provides an interconnection with the C.O.M.M. Water System to supply clean water to Hyannis during water emergencies.



### ADDITIONAL DETAILS

This project constructed a temporary portable pump station in a Conex box that is fitted with water treatment equipment including pumps, valves, piping, and chemical treatment, all of the essential components of a permanent pump station. The temporary pump station is located on Phinney's Lane in Barnstable, MA, and serves as an interconnect to the C.O.M.M. (Centerville-Osterville-Marstons Mills) Water System to supply clean drinking water to the Hyannis Water System during water emergencies.