

# WHO WE ARE

## 2023





# OUR HISTORY & MISSION



Original Headquarters - 1960



Headquarters Expands to Methuen, MA - 1972



Headquarters Expands Again to Salem, NH - 2001



Current Headquarters in Plaistow, NH - 2016

## OUR HISTORY

Methuen Construction was originally founded by the Asadoorian family in 1960, starting as a small residential and commercial construction company. We have grown into one of the most widely recognized names in the construction industry.

From 2014 to 2021, company owner and 30+ year teammate, Joseph Barbone, guided Methuen Construction with an eye on expanding and diversifying our client list, services, and work regions. In 2021, he fulfilled his vision and transferred ownership to MWH.

Together we have a team of more than 2,200 construction professionals across the U.S., with expertise in preconstruction, construction, design-build, self-performance, commissioning and start-up, digital delivery, and alternate project delivery methods.

Currently, Methuen Construction performs complex construction projects in the private, federal and municipal sectors, continuously expanding our capabilities in the heavy industrial, renewable energy, power, modular, pre-fabrication, transportation, federal and municipal technologies.

For a complete timeline of the company's history, experience and capabilities, visit [www.MethuenConstruction.com](http://www.MethuenConstruction.com).

## OUR MISSION & VISION

Methuen Construction provides quality building and infrastructure construction services for private, federal, and public clients.

Our team consistently completes its projects in an innovative, well planned, on time, and above all else, safe manner. These results are accomplished through a commitment to teamwork that brings together our core and support groups creating a culture of cooperation, high energy, respect for individuals, and a can-do spirit.

Our vision is to further empower and develop a team of highly skilled, motivated and dynamic teammates consisting of the highest caliber construction industry leaders and professionals, utilizing an efficient and technologically advanced infrastructure to deliver successful projects to our clients while achieving sustainable and consistent profitability enabling our organization to reward our teammates and to endure as the most preferred construction employer in the Northeastern U.S.



# HEADQUARTERS

Methuen Construction opened its new 190,000 square foot facility and corporate headquarters in Plaistow, New Hampshire in September 2016.

Strategically located within the I-495 corridor, the facility serves as the main operational headquarters for Methuen Construction.

Methuen Construction corporate headquarters houses the main support staff for our construction operations team including our executive leadership group, project management staff, human resources department, accounting and finance department, estimating department, information technology department, safety department, equipment and facilities department.



- 36 acre property
- 190,000 sqft facility
- 36,000 sqft office space
- 90,000 sqft open work space
- 7 overhead bridge cranes
- 50 ft production ceilings
- 26 overhead doors





# SAFETY

At Methuen Construction, nothing is more important than ensuring the safety and health of our teammates, subcontractors, and clients. Our #1 priority is ensuring everyone returns home safely to their families each day.

We believe that the management skills, commitment, and teamwork required to achieve a zero-injury workplace are identical to those required to build an organizationally strong and financially secure company. By striving for zero, we are not only meeting our moral obligation, but guaranteeing our future success.

Methuen Construction's safety commitment is led by its VP of Safety, Risk & Controls, Assistant Corporate Safety Director and several dedicated Site Safety & Health Officers. This commitment to safety helps us maintain an EMR well below the industry standard of 1.0.



Leading with Safety Program Recipients

## CURRENT EMR = 0.65



**JOSEPH BARRY, CHST, CIT**  
*VP of Safety, Risk & Controls*

With over 25 years of experience as a Certified Safety Professional, Joe has extensive experience in the construction industry with proven success in controlling loss and developing cost savings. Joe is directly responsible for

corporate safety and compliance programs, including safety orientation, training and certifications, site inspections, corporate and site-specific safety manuals, safety steering committee, safety committee, safety recognition program, subcontractor orientation, job safety analysis, process safety management, compliance and documentation.



Below are just some of the safety certifications our Safety team holds:

- Asbestos Supervisor
- Certified Safety Professional
- Certified Scaffold Competent Person
- Competent Person in Lead Paint Removal
- Construction Health & Safety Technician
- CPR/AED First Aid Certified
- Crane Tech - Rigging/Signaling Instructor
- Excavation Safety Training for Competent Persons

- HAZWOPER 8 and 40 hour
- NCCER Master Trainer and Core Instructor
- NECS Certified Signaller & Basic Rigger
- NFPA Hot Work Safety Certified Trainer
- OSHA 500, 510, 511, 2015, 2225, 3095, 3110, 7100, 7205, 7505 Certified
- Scissor Lift & Boom Lift General Operator Training
- Trench/Excavation Train the Trainer



Methuen  
CONSTRUCTION

Methuen  
CONSTRUCTION

# MANAGEMENT SERVICES

Collectively, Methuen Construction’s professional staff consists of a large and diverse pool of experience and talent that includes:

Project Executives  
Project Managers  
Project Engineers  
Project Administrators  
Pre-Construction Professionals

Superintendents and Foremen  
Field Engineers  
Safety Professionals  
Scheduling Professionals  
Quality Control Managers

These professionals, some of which are pictured below, embody Methuen Construction’s innovative culture which allows us to maintain a competitive advantage over our competitors and assemble the right project team based on the size and complexity of each project.



Methuen Construction offers a wide variety of pre-construction, construction and post-construction services.

## PRE-CONSTRUCTION

- Conceptual layouts and initial designs after an initial review of client requirements
- Constructability reviews
- Value engineering evaluations
- Construction budget creation or confirmation
- Review and approval of available vendor technology

## CONSTRUCTION & POST-CONSTRUCTION

- Leverage long-term relationships with vendors and subcontractors to deliver maximum cost benefits to the client
- Manage execution of all construction requirements from groundbreaking through commissioning
- Provide systems startup, testing and commissioning services
- Conduct new equipment and facilities training to owner’s operational personnel
- As-built drawings, operations manuals and closeout documents



# SKILLED TRADES

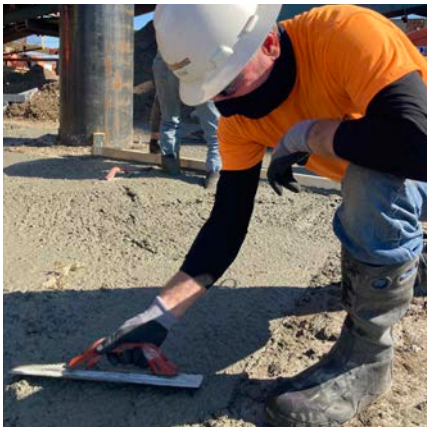


Methuen Construction self-performs construction services using highly skilled professionals including:

**Millwrights  
Ironworkers  
Pipefitters  
Carpenters**

**Heavy Equipment Operators  
Pipelayers  
Laborers  
Welders**

Utilizing our skilled professionals, Methuen Construction consistently achieves complete client satisfaction delivering outstanding construction services and innovative solutions safely, on time and under budget.



The following are some of our self-performed services:

## MECHANICAL

- Rigging
- Equipment Setting
- Equipment Assembly
- Modular Process Skids
- Large & Small Diameter Piping Systems

## CIVIL-SITE WORK

- Mass Earth Moving
- Excavation/Site Grading/Backfill
- Underground Utilities
- Earth Support Systems
- Dewatering
- Surface Demolitions & Restorations

## CONCRETE

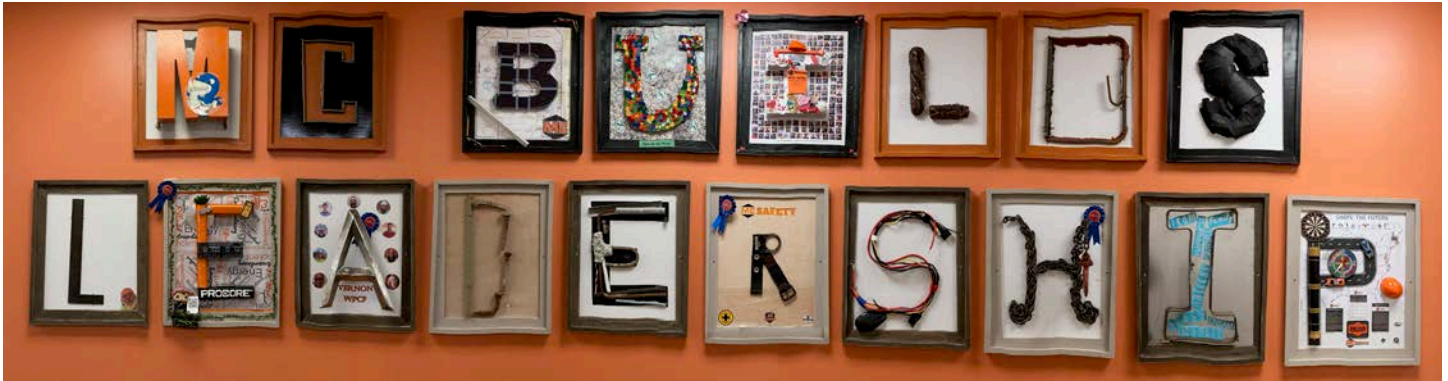
- Gang Form Systems
- Elevated Slabs
- Foundation Systems
- Concrete Superstructures
- Precast
- Cast-in-Place
- Prestressed
- Ductbanks

## ARCHITECTURAL

- Full Range of Carpentry including Framing, Trim and Interior Fit-out
- Laboratory and Office Cabinetry and FF&E



# LEADERSHIP

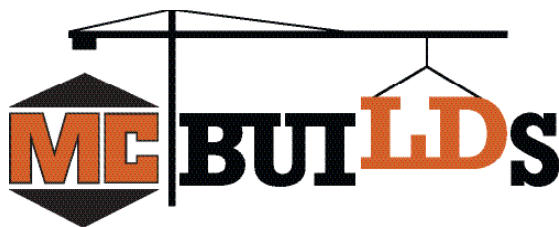


*"To improve every teammates leadership capabilities resulting in personal and professional growth while advancing the company from great to exceptional"*

Methuen Construction believes everyone possesses leadership traits and we are committed to educating every teammate to effectively identify and use their own. We also believe in providing every Methuen teammate, regardless of his/her position, opportunities to build on their education and to advance both personally and professionally, enabling promising careers.

Restructured in 2022, Methuen Construction's Leadership Development Program provides a variety of leadership options that will improve every teammate's leadership capability resulting in personal and professional growth.

Methuen Construction is proud to also offer Methuen University classes, tuition reimbursement and other trainings tailored specifically to individual teammates.



# THE METHUEN WAY



Methuen Construction Company  
 2022 Summer Outing

The Methuen Way identifies the five core, ethical values that represent who we are as an organization. At Methuen Construction, it is important that our individual decisions incorporate the following core values:

## Respect

Treat others with respect, dignity, courtesy just as you expect to be treated by them

## Integrity

Be honest and ethical when interacting with teammates, clients, subcontractors, and suppliers

## Trust

Believe in the abilities of your fellow teammates to fulfill their assigned responsibilities

## Spirit

Carry out all tasks with energy, enthusiasm, cooperation and a positive attitude and recognize fellow teammates for a job well done

## Continuous Improvement

Suggest and incorporate new ideas to improve efficiency and results